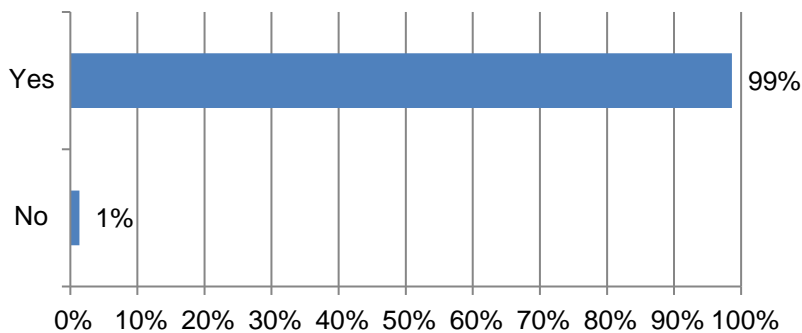


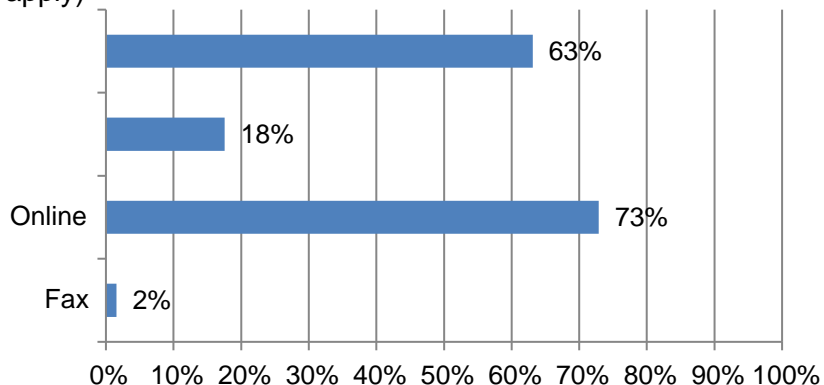
2021 Underground Utility Safety and Damage Prevention 811 Survey Results

Total responses 520

1. Are you familiar with the 811/call before you dig program/requirements in areas you work in



2. What means do you use to submit locate requests to your local 811 center in advance of all excavation activities you undertake? (mark all that apply)



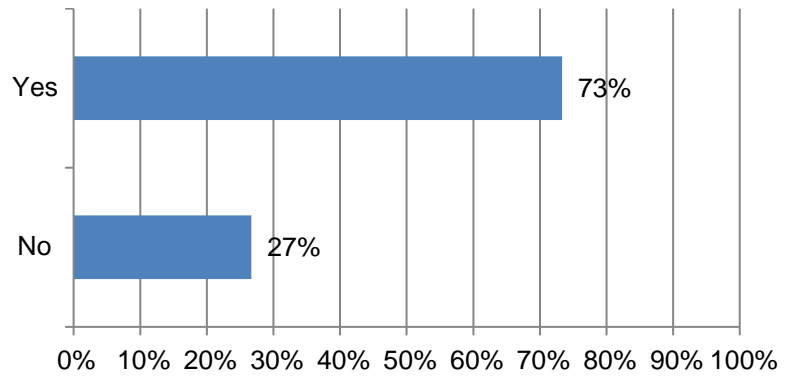
3. Do you "white line" the area you would like located in advance of submitting a locate request?

4. What aspects of the 811 process/compliance does your employee training include? (mark all that apply)

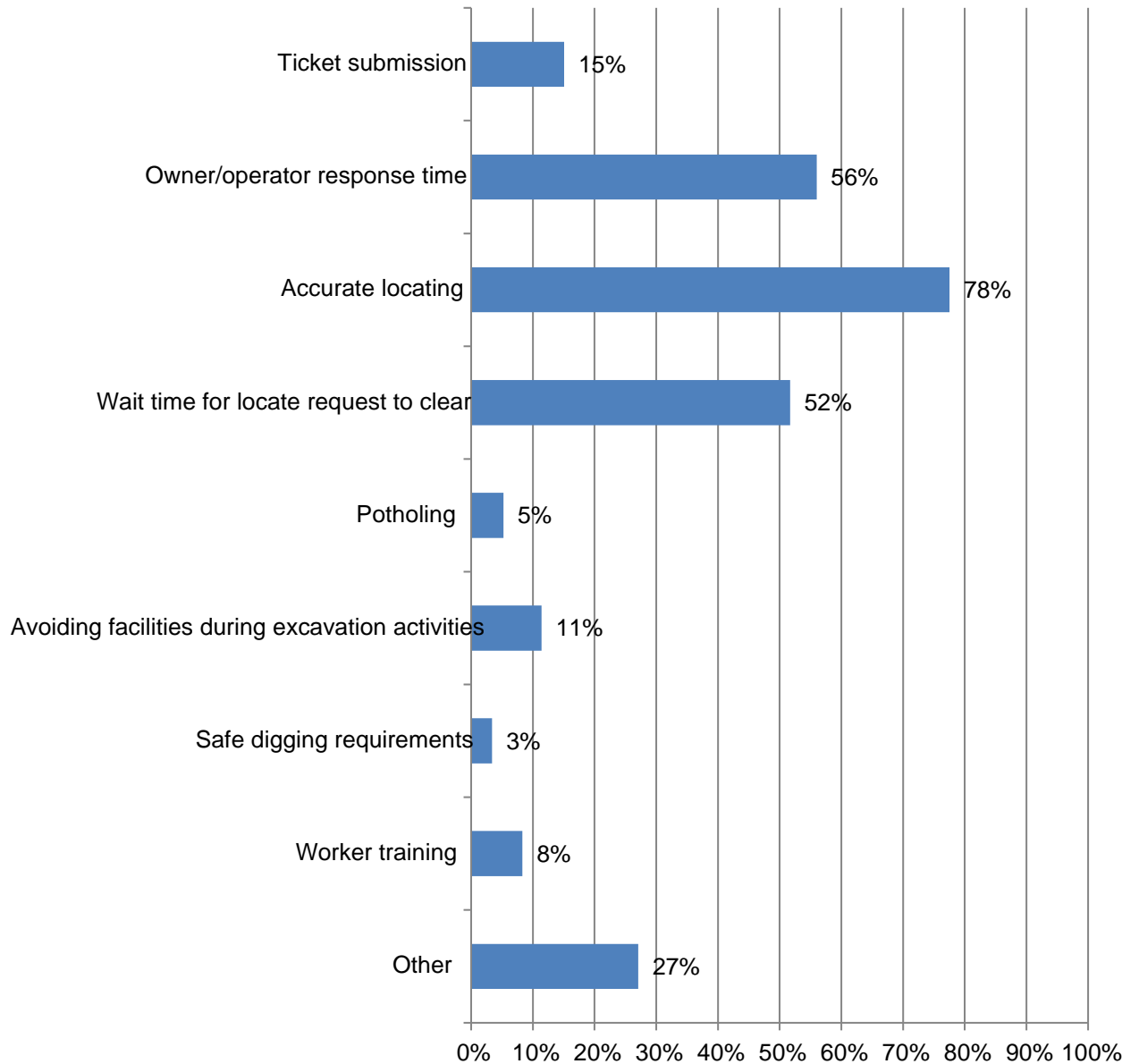
--	--	--	--	--	--	--	--	--	--	--

5. Are you familiar with the operations and members of the 811 centers in areas where you perform excavation activities?

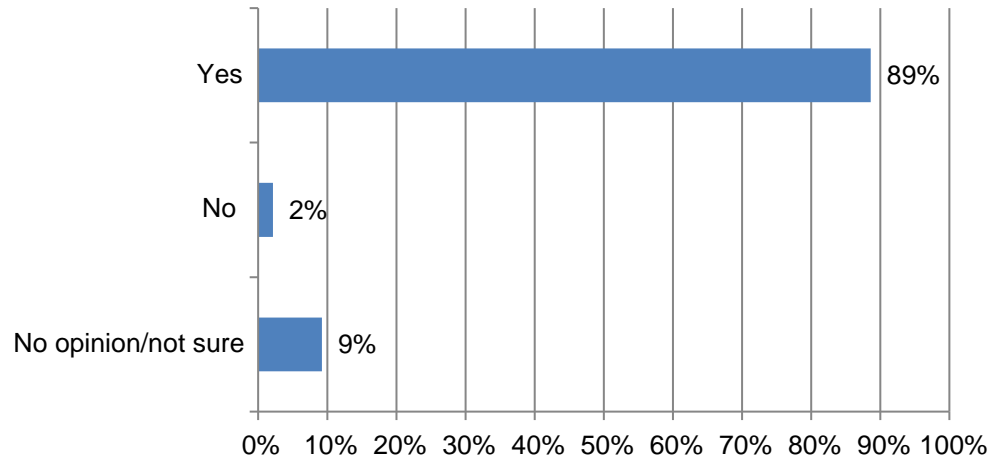
6. Are there any weaknesses in the 811 process?



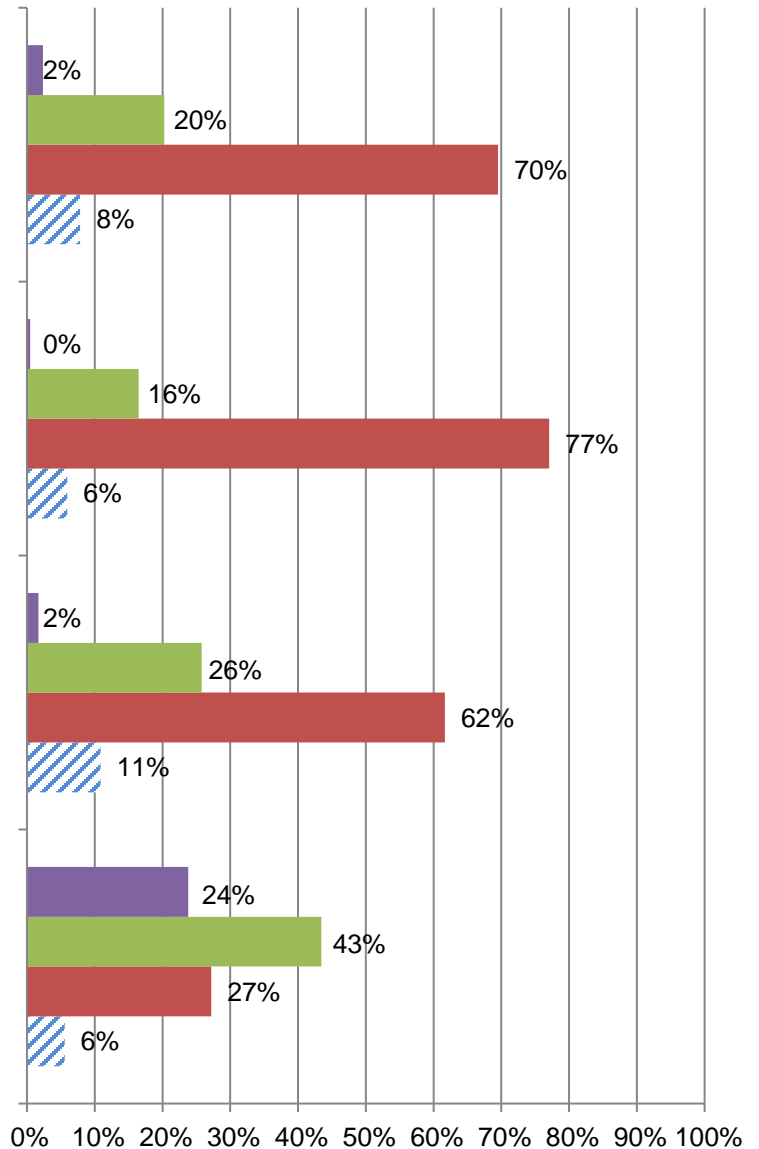
7. What do you find are the weakest elements of the 811 process? (Please choose up to 3)



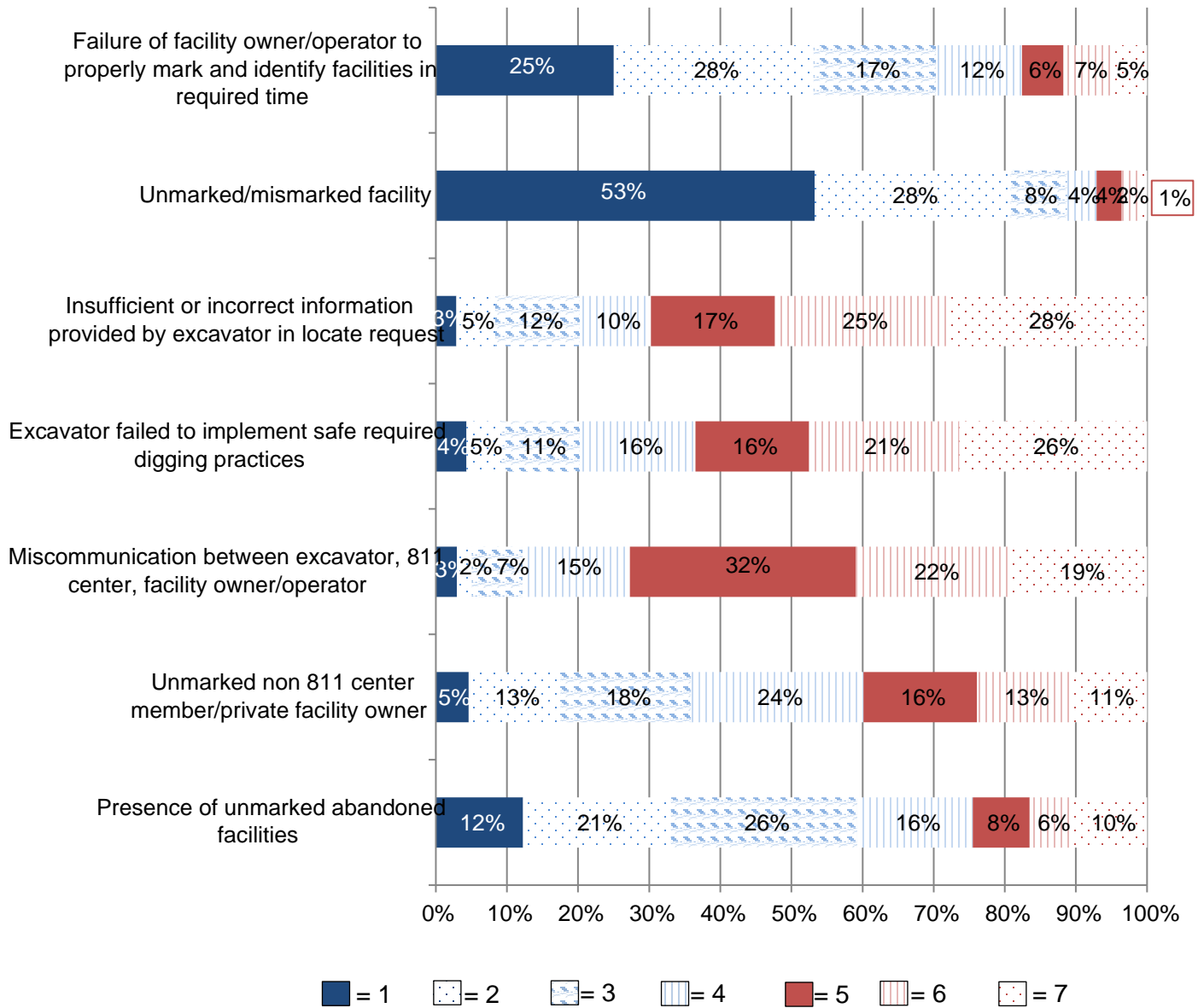
8. In some states 811 centers are governed by a board of directors that does not have excavator/construction industry representation; do you think excavators/the construction industry representation; do you think excavators/the construction industry should have vested representation on those boards?



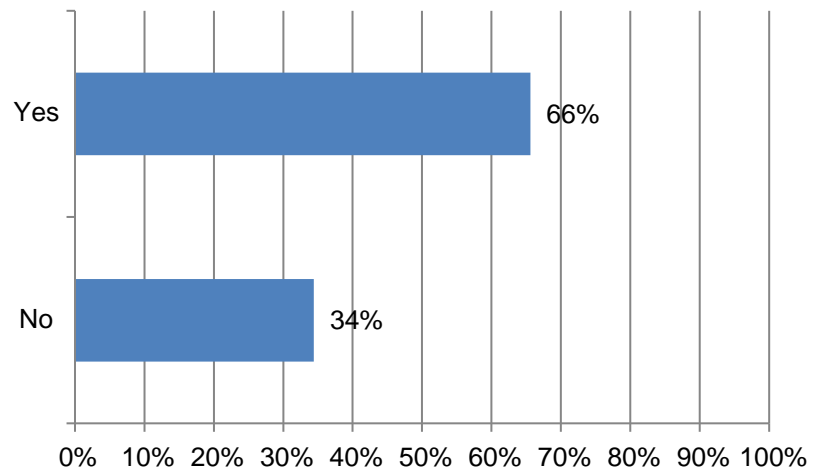
9. Do you find the following elements of the 811 process in areas you work in satisfactory?



15. Please rank below the root causes of most frequent damages/near misses that occur on your job sites (1-7; Most to Least);

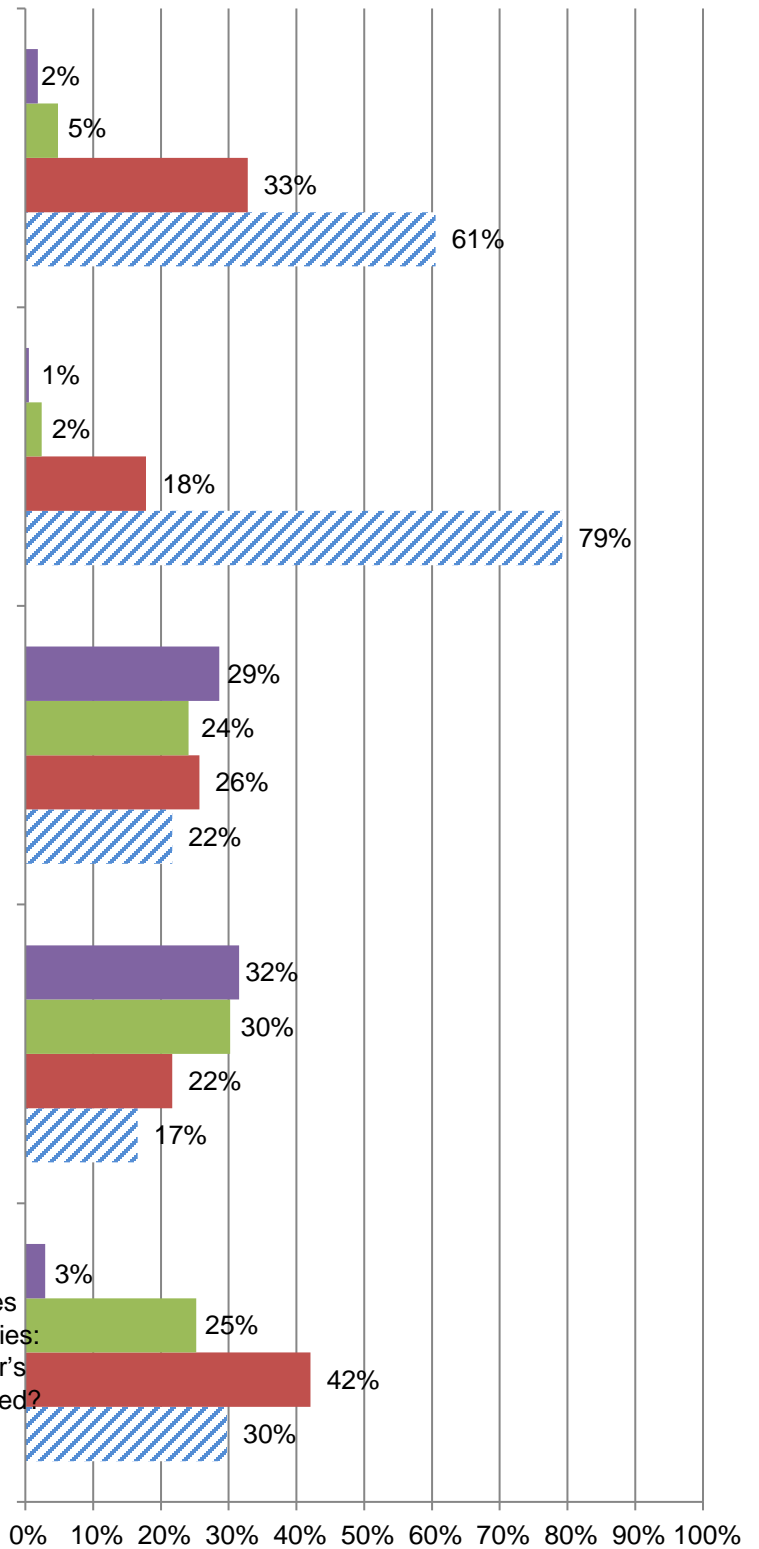


16. Have you ever received a claim or invoice from a facility owner/operator for a damage to an existing facility which you were not responsible for?



17. Are you familiar with the CommonGroundAlliance

19. Please select the option that best describes the following practices;



On projects within public rights-of-way that require facilities to be relocated before commencing construction activities: Do you experience delays due to utility owner/operator's failure to relocate facilities in a timely manner as required?

22. What types of excavating equipment do you primarily use? (mark all that apply)

